



# MFT-FOX-VT-2L- SZ-20

Hilti facade system



## CONTENT AND OVERVIEW

|                             |       |
|-----------------------------|-------|
| Panels                      | 3     |
| Application and Description | 4     |
| System Drawings             | 5-17  |
| Brackets Range              |       |
| MFT-FOX VT Medium           | 18    |
| MFT-FOX VT Large            | 18    |
| Bracket Profile Adjustment  | 19    |
| Products Range              | 20-21 |

MFT-FOX-VT-2L-SZ-20



Metal



Composite



This is an interactive page! Click on the move-back button to jump back to the CONTENT AND OVERVIEW.





## APPLICATION AND DESCRIPTION

### MFT-FOX-VT-2L-SZ-20

The system consists of thermal free wall brackets and profiles, and is specifically designed for vertical/horizontal substructures with additional horizontal system profiles for the Fixing of ACM cassettes in ventilated facades. Wall brackets are supplied with powder coated base plate, according to the method of installation to the base material- anchors, screws and direct fastening -with different hole geometries in the base plate (available hole geometries are shown in the catalogue, on HOL or on the following pages).

Wall brackets are designed with both fixed and flexible points to allow for thermal expansion of the profile. The fixed point takes the weight of the panels and substructure and the proportional wind loads, while the flexible point only assumes the proportional wind loads.

Vertical profiles are connected to the wall brackets with specially designed screws for fixed and flexible points. This allows virtually-frictionless sliding of the profiles against the wall brackets and keeps the profile connected by the fixed point in place. The flexible point makes sure that there are no additional loads on the substructure from the profile's expansion forces.

The adjustment of the profiles against the wall brackets is supported with a 'helping hand'. The helping hand keeps the profile in position whilst the profile is being fixed with screws, allowing a fast connection to the bracket. With this system, wall tolerances of up to 40 mm can be perfectly balanced. The wall brackets are available from 140 mm to 320 mm.

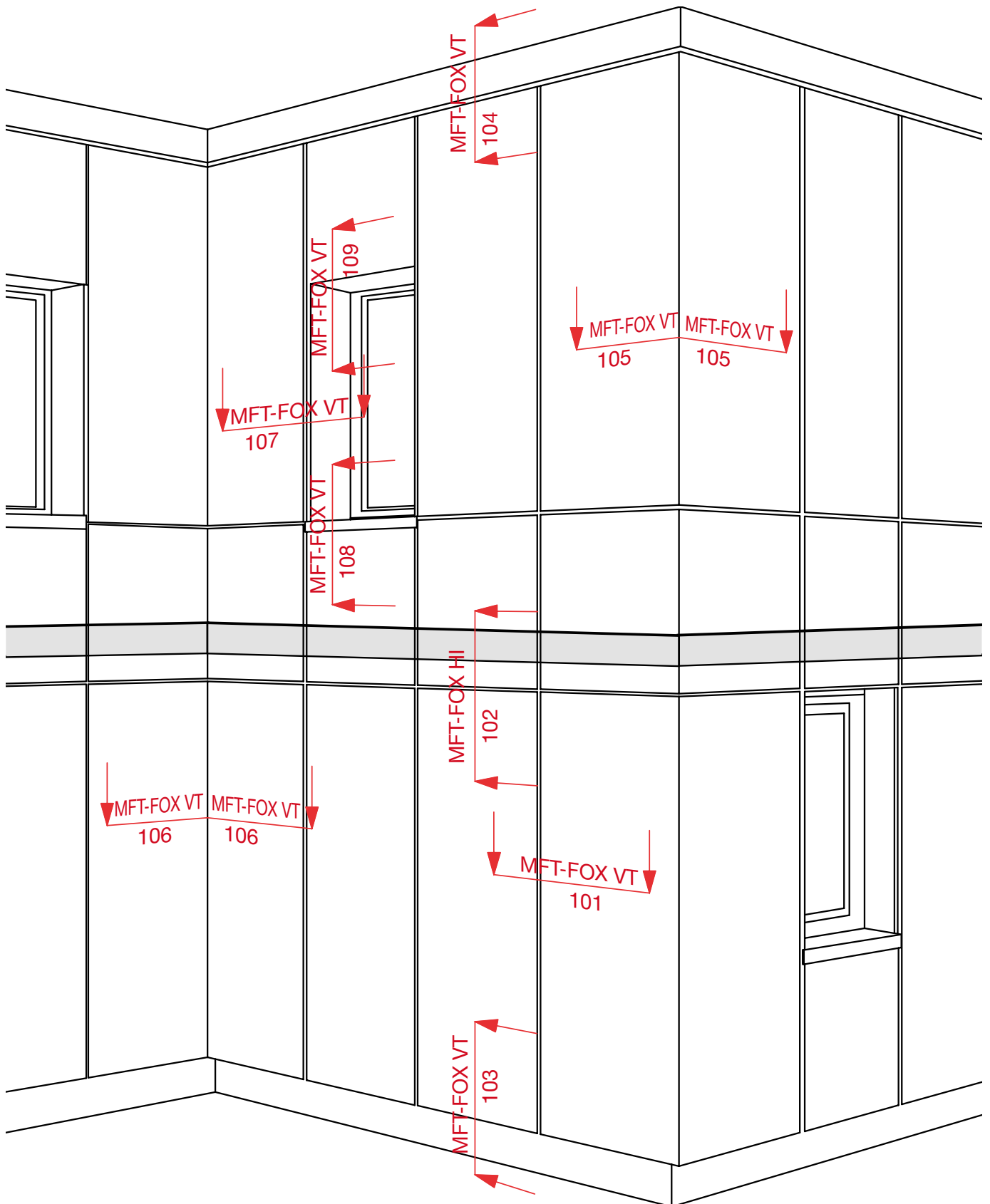
To avoid corrosion the base plate of the bracket is powder coated.

The horizontal system profiles (Start, S and Z) will be fixed with stainless steel screws on the vertical substructure. The system profile allow a fixing of the cassettes with a shadow gap.

#### **Advantages:**

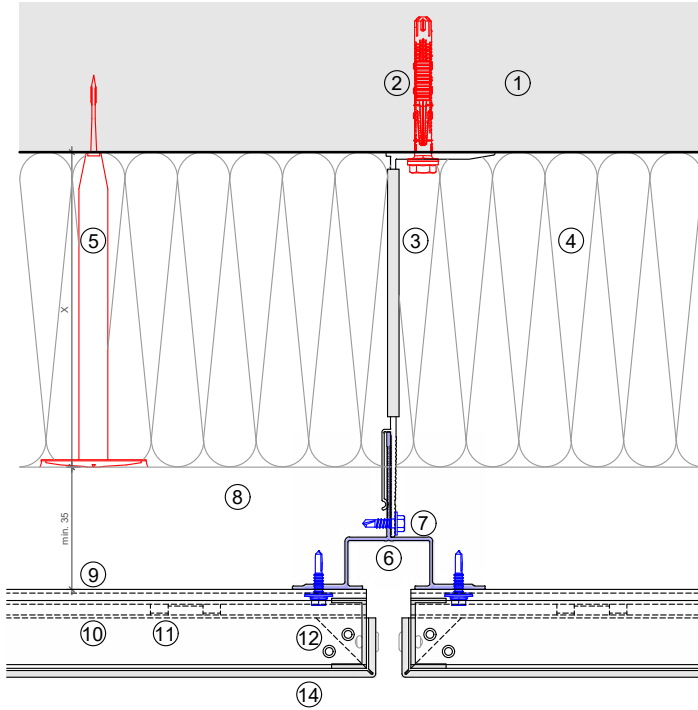
- Flexible design using fixed and flexible points
- 40 mm adjustment capability of the profiles in the wall brackets
- Bracket length from 140 mm to 320 mm
- Brackets can be mounted using a range of methods - anchors, screws or direct fastening
- Avoiding contact corrosion by powder coated base plate
- Easy fixing of the panels with a shadow gap
- Substructures can be designed with PROFIS Facade to generate technically-sound and economically-optimized solutions
- Can be used with all common ACM cladding materials

## VIEW OF CLADDING



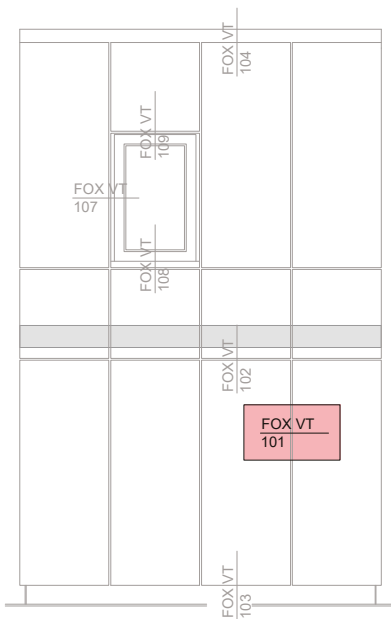
This is an interactive page! By clicking on a system part you get directed to the respective detail page.  
Click on the move-back button to jump back to the CONTENT AND OVERVIEW.

# MFT-FOX VT 101



**Legend:**

- ① Base material
- ② Anchor acc. to static
- ③ Bracket and isolator
- ④ Insulation
- ⑤ Fixing insulation
- ⑥ Profile
- ⑦ Self drilling screw
- ⑧ Ventilation gap
- ⑨ Z profile
- ⑩ S-profile
- ⑪ Plastic clips
- ⑫ Rivet
- ⑭ Cladding

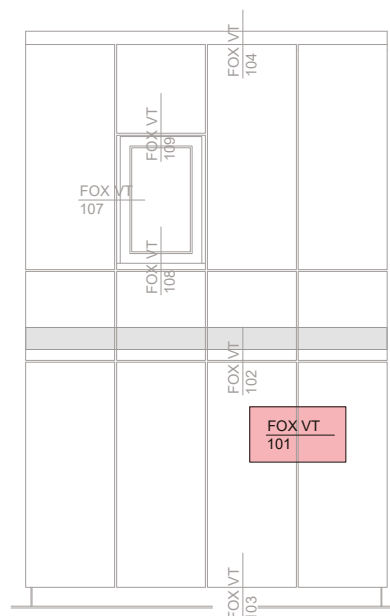
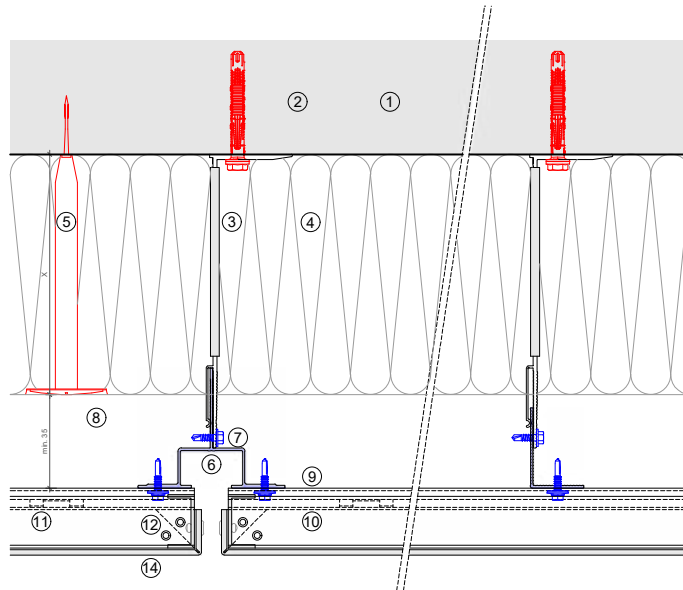


This is an interactive page! Click on the move-back button to jump back to the VIEW OF CLADDING.

## MFT-FOX VT 101

**Legend:**

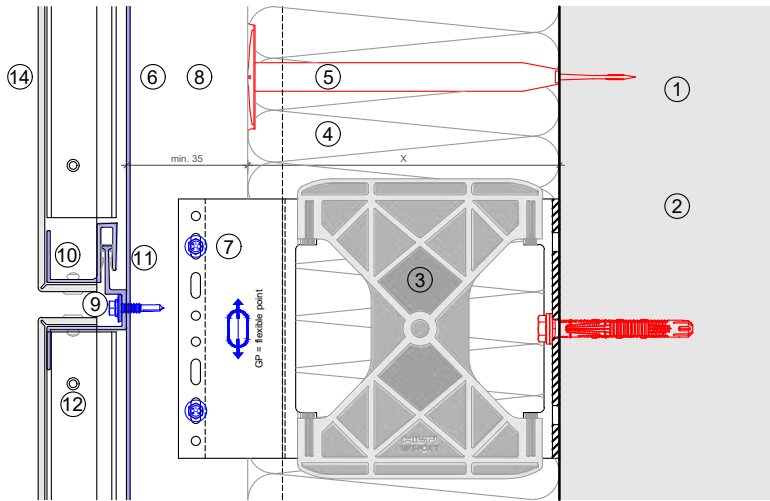
- ① Base material
- ② Anchor acc. to static
- ③ Bracket and isolator
- ④ Insulation
- ⑤ Fixing insulation
- ⑥ Profile
- ⑦ Self drilling screw
- ⑧ Ventilation gap
- ⑨ Z profile
- ⑩ S-profile
- ⑪ Plastic clips
- ⑫ Rivet
- ⑬ Cladding



This is an interactive page! Click on the move-back button to jump back to the VIEW OF CLADDING.



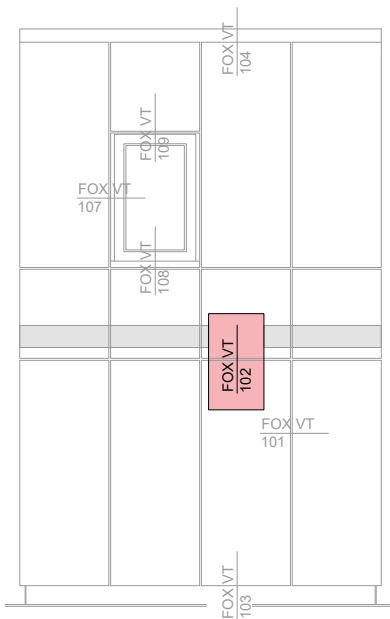
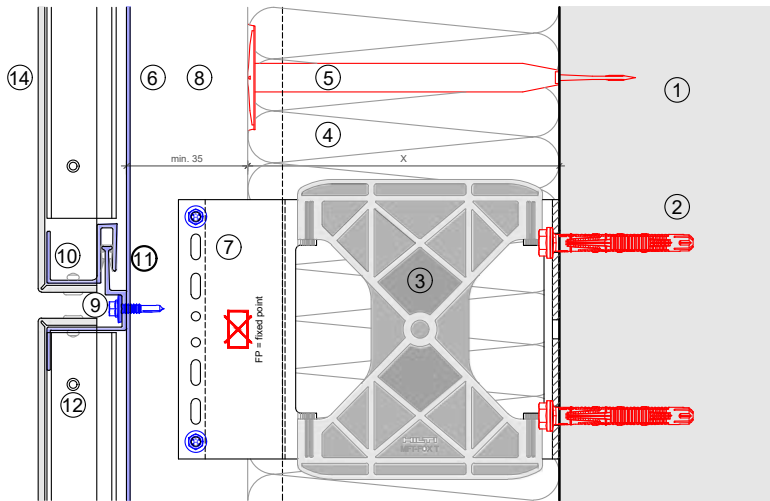
# MFT-FOX VT 102



### Legend:

- ① Base material
- ② Anchor acc. to static
- ③ Bracket and isolator
- ④ Insulation
- ⑤ Fixing insulation
- ⑥ Profile
- ⑦ Self drilling screw
- ⑧ Ventilation gap
- ⑨ Z profile
- ⑩ S-profile
- ⑪ Plastic clips
- ⑫ Rivet
- ⑭ Cladding

Vertical section-fixed point



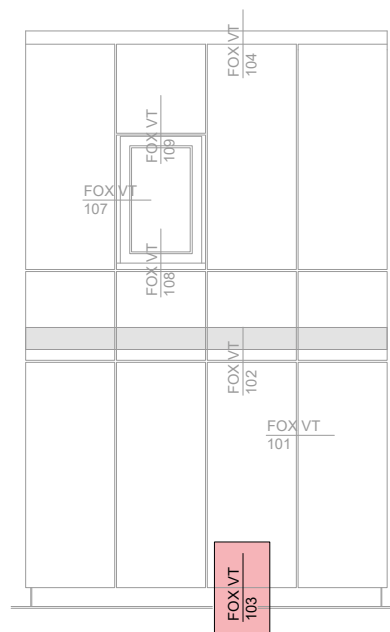
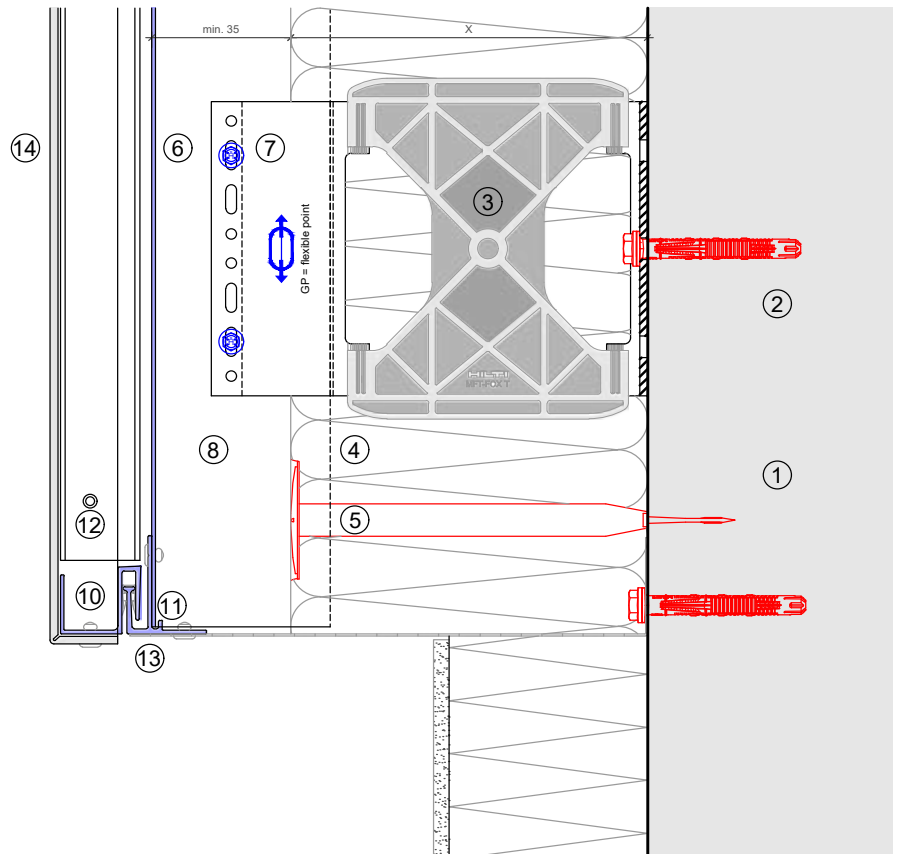
This is an interactive page! Click on the move-back button to jump back to the VIEW OF CLADDING.



MFT-FOX VT 103

Legend:

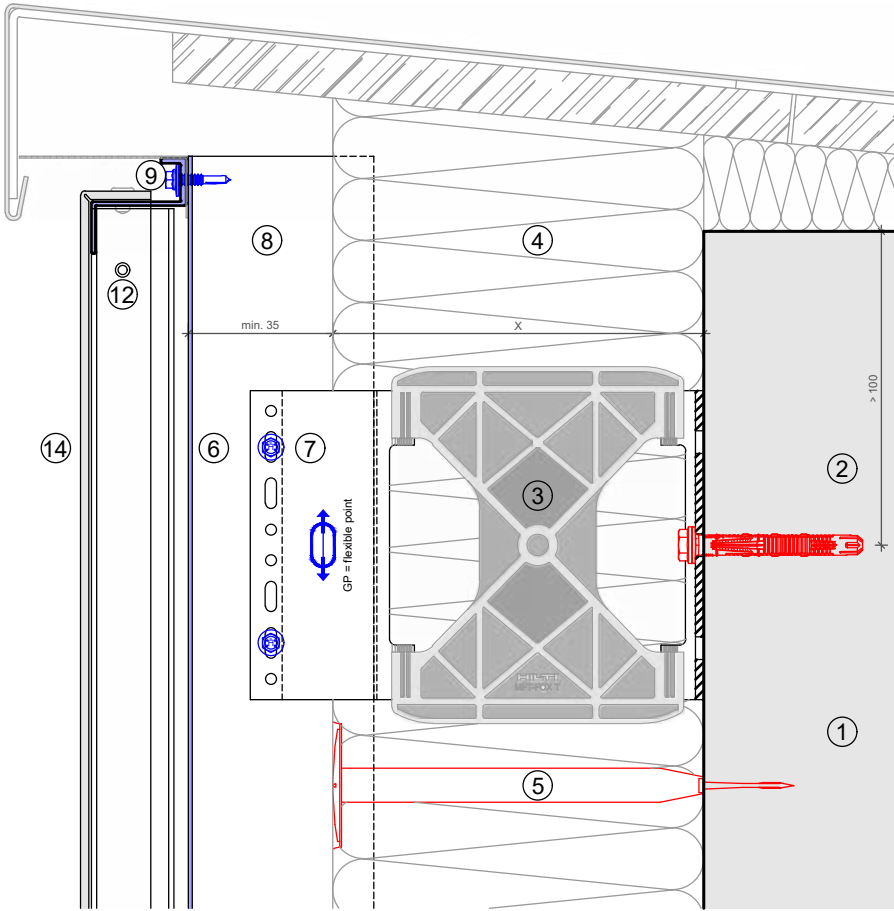
- ① Base material
- ② Anchor acc. to static
- ③ Bracket and isolator
- ④ Insulation
- ⑤ Fixing insulation
- ⑥ Profile
- ⑦ Self drilling screw
- ⑧ Ventilation gap
- ⑩ S-profile
- ⑪ Plastic clips
- ⑫ Rivet
- ⑬ Base profile
- ⑭ Cladding



This is an interactive page! Click on the move-back button to jump back to the VIEW OF CLADDING.

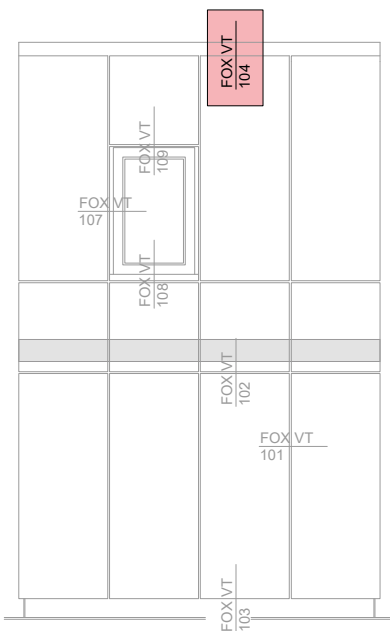


# MFT-FOX VT 104



**Legend:**

- ① Base material
- ② Anchor acc. to static
- ③ Bracket and isolator
- ④ Insulation
- ⑤ Fixing insulation
- ⑥ Profile
- ⑦ Self drilling screw
- ⑧ Ventilation gap
- ⑨ Z profile
- ⑫ Rivet
- ⑭ Cladding

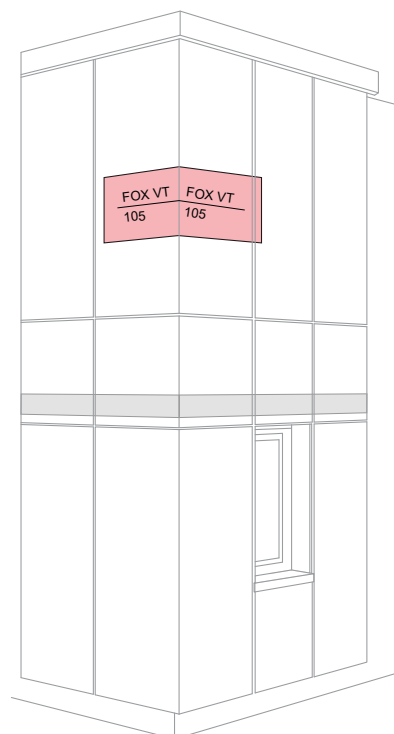
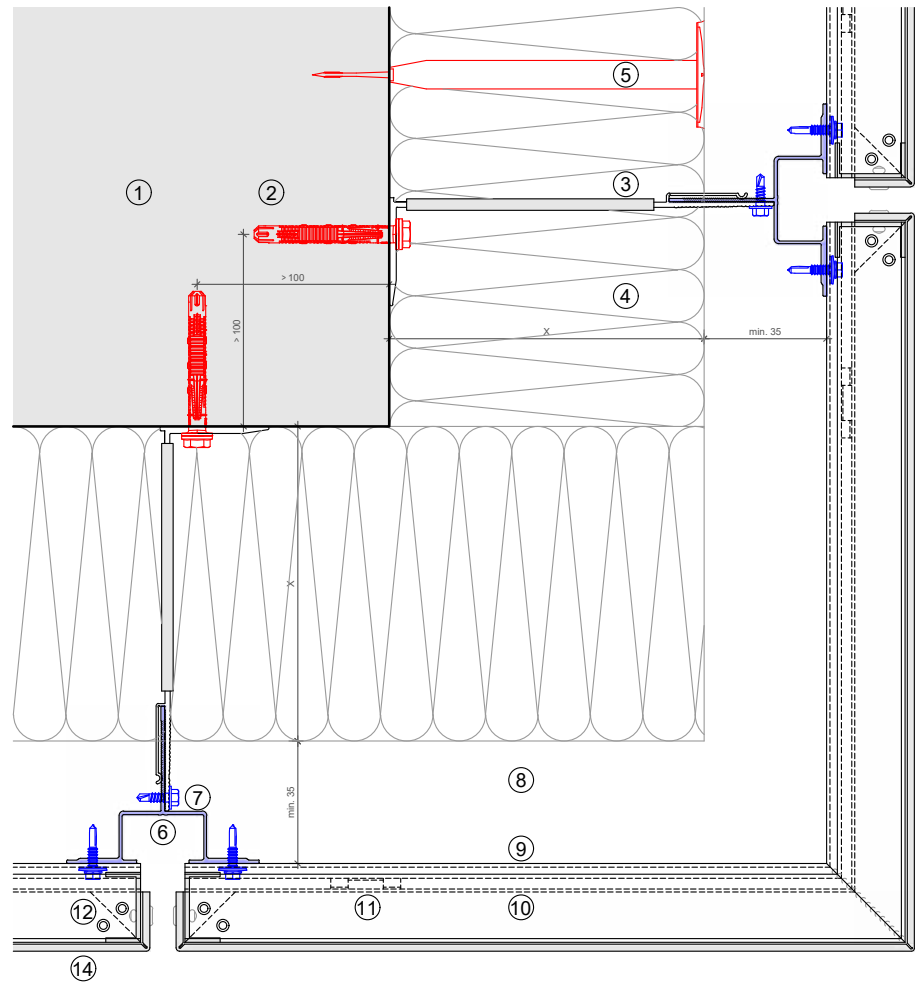


This is an interactive page! Click on the move-back button to jump back to the VIEW OF CLADDING.

MFT-FOX VT 105

Legend:

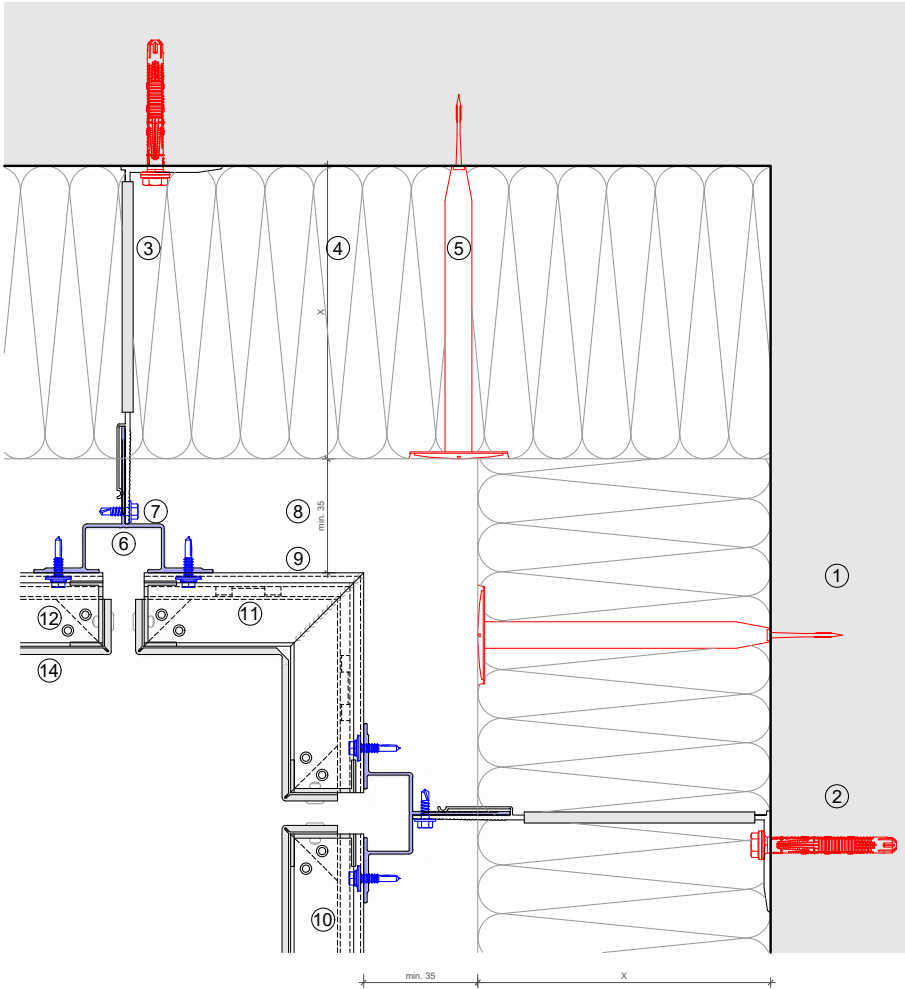
- ① Base material
- ② Anchor acc. to static
- ③ Bracket and isolator
- ④ Insulation
- ⑤ Fixing insulation
- ⑥ Profile
- ⑦ Self drilling screw
- ⑧ Ventilation gap
- ⑨ Z profile
- ⑩ S-profile
- ⑪ Plastic clips
- ⑫ Rivet
- ⑭ Cladding



This is an interactive page! Click on the move-back button to jump back to the VIEW OF CLADDING.



# MFT-FOX VT 106



**Legend:**

- ① Base material
- ② Anchor acc. to static
- ③ Bracket and isolator
- ④ Insulation
- ⑤ Fixing insulation
- ⑥ Profile
- ⑦ Self drilling screw
- ⑧ Ventilation gap
- ⑨ Z profile
- ⑩ S-profile
- ⑪ Plastic clips
- ⑫ Rivet
- ⑭ Cladding

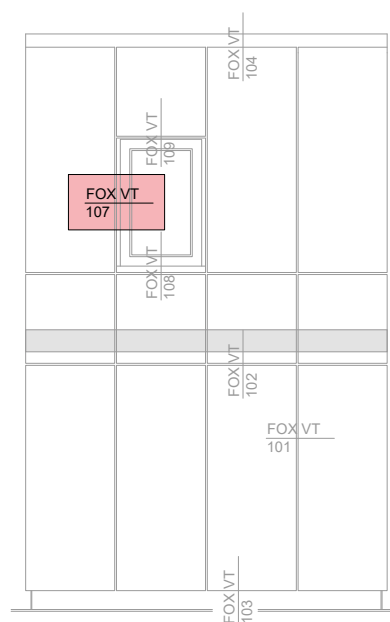
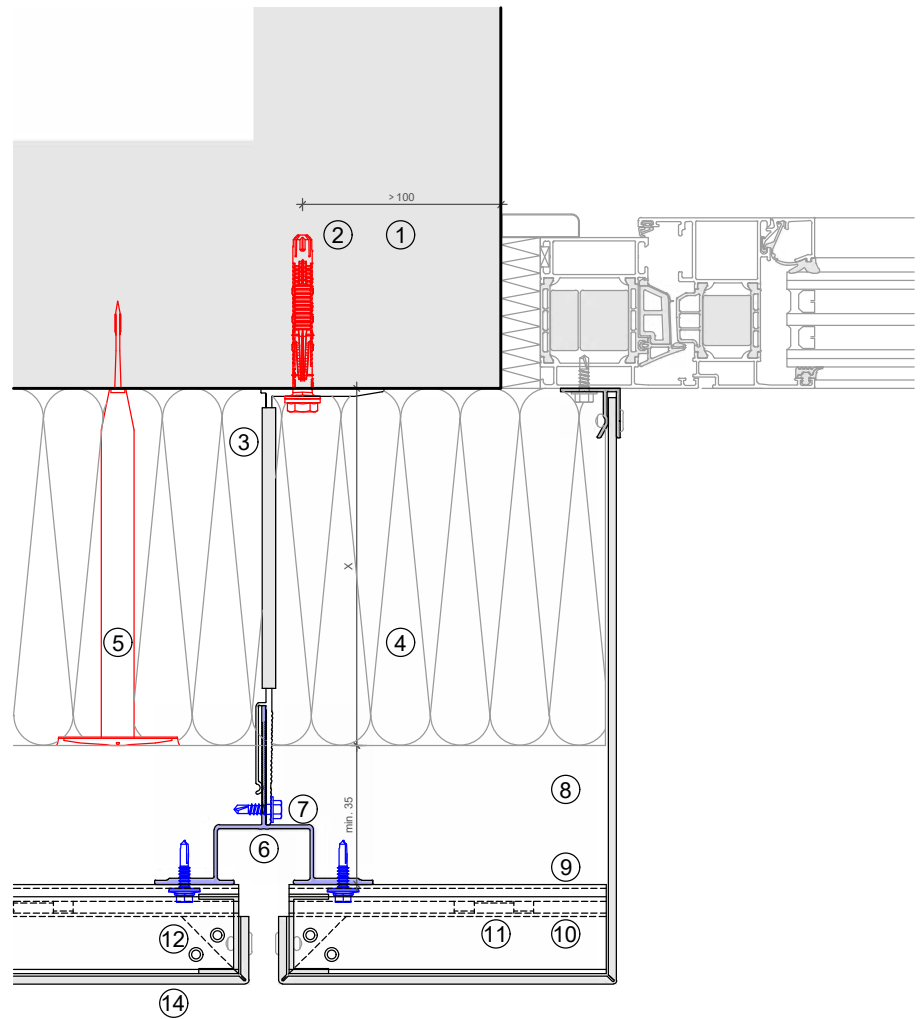


This is an interactive page! Click on the move-back button to jump back to the VIEW OF CLADDING.

## MFT-FOX VT 107

**Legend:**

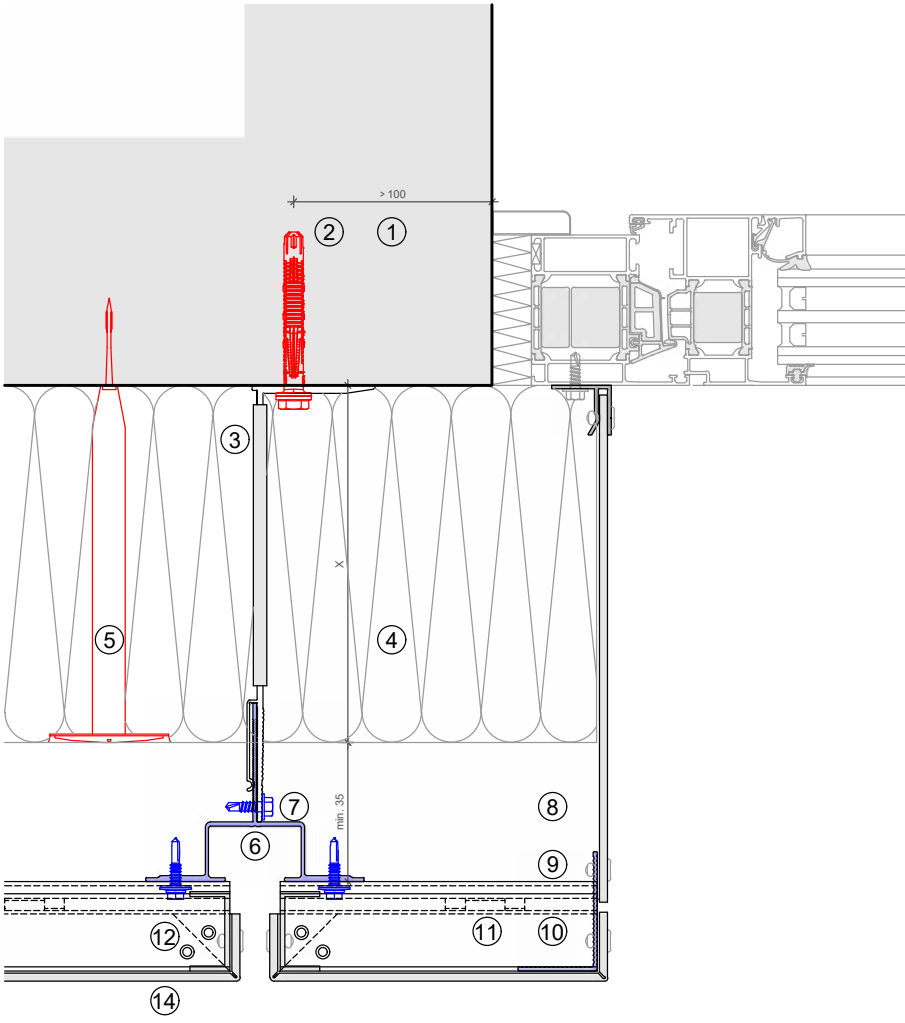
- ① Base material
- ② Anchor acc. to static
- ③ Bracket and isolator
- ④ Insulation
- ⑤ Fixing insulation
- ⑥ Profile
- ⑦ Self drilling screw
- ⑧ Ventilation gap
- ⑨ Z profile
- ⑩ S-profile
- ⑪ Plastic clips
- ⑫ Rivet
- ⑭ Cladding



This is an interactive page! Click on the move-back button to jump back to the VIEW OF CLADDING.

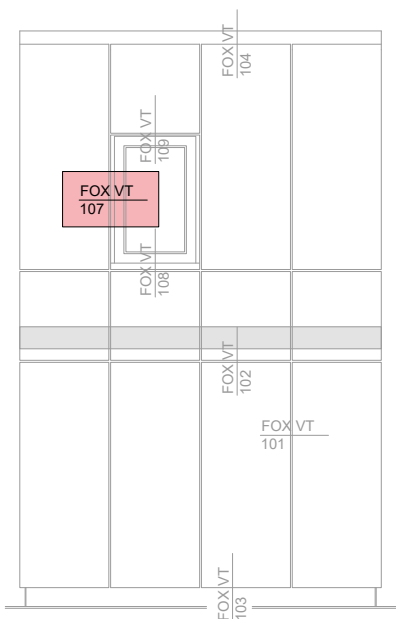


# MFT-FOX VT 107



**Legend:**

- ① Base material
- ② Anchor acc. to static
- ③ Bracket and isolator
- ④ Insulation
- ⑤ Fixing insulation
- ⑥ Profile
- ⑦ Self drilling screw
- ⑧ Ventilation gap
- ⑨ Z profile
- ⑩ S-profile
- ⑪ Plastic clips
- ⑫ Rivet
- ⑬ Cladding

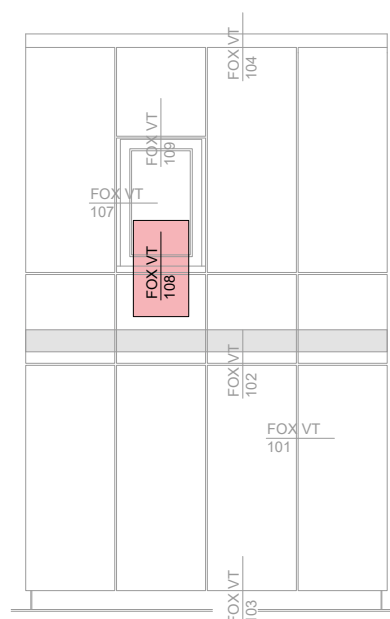
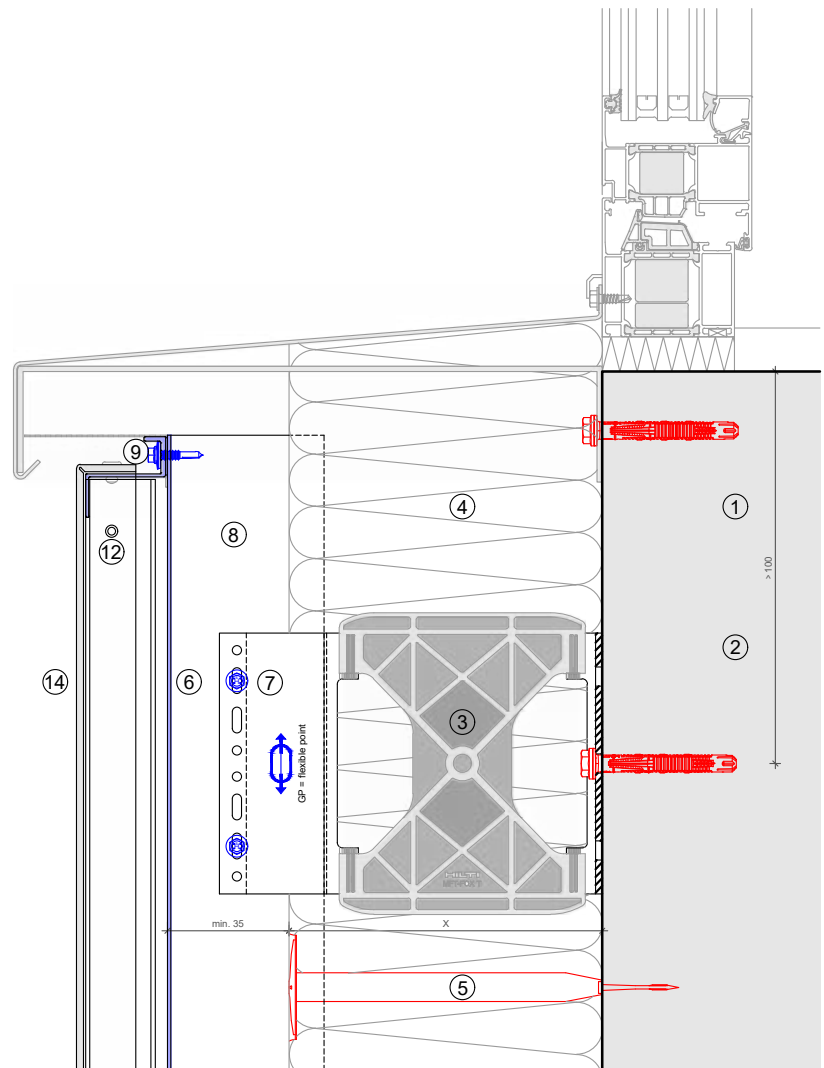


This is an interactive page! Click on the move-back button to jump back to the VIEW OF CLADDING.

## MFT-FOX VT 108

**Legend:**

- ① Base material
- ② Anchor acc. to static
- ③ Bracket and isolator
- ④ Insulation
- ⑤ Fixing insulation
- ⑥ Profile
- ⑦ Self drilling screw
- ⑧ Ventilation gap
- ⑨ Z profile
- ⑪ Plastic clips
- ⑫ Rivet
- ⑭ Cladding



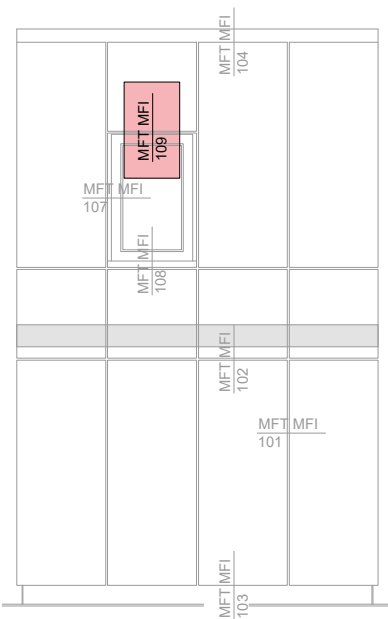
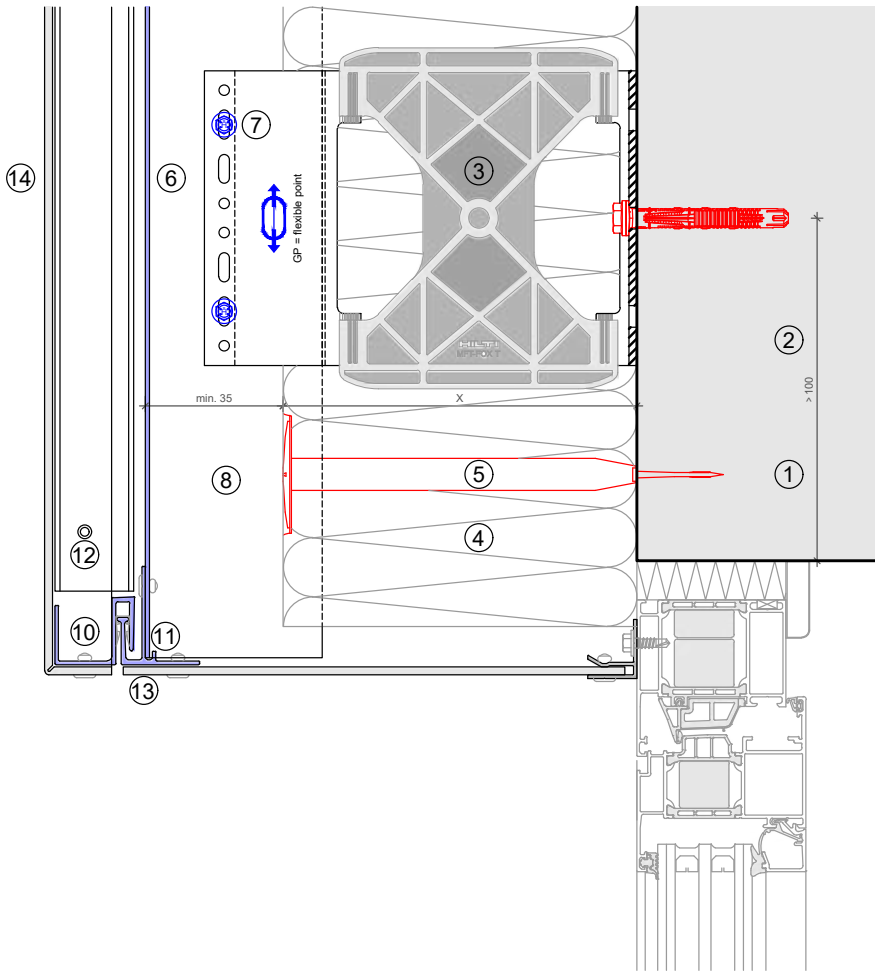
This is an interactive page! Click on the move-back button to jump back to the VIEW OF CLADDING.



# MFT-FOX VT 109

### Legend:

- ① Base material
- ② Anchor acc. to static
- ③ Bracket and isolator
- ④ Insulation
- ⑤ Fixing insulation
- ⑥ Profile
- ⑦ Self drilling screw
- ⑧ Ventilation gap
- ⑨ Z profile
- ⑩ S-profile
- ⑪ Plastic clips
- ⑫ Rivet
- ⑬ Base profile
- ⑭ Cladding



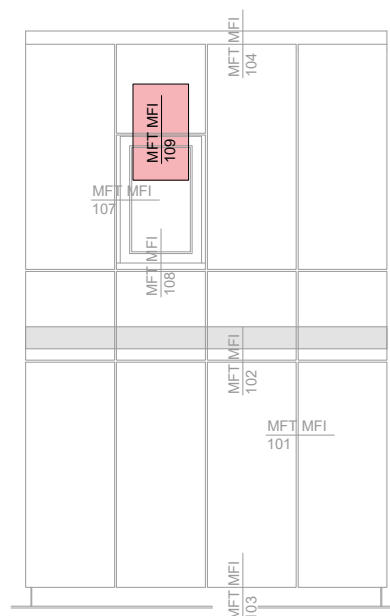
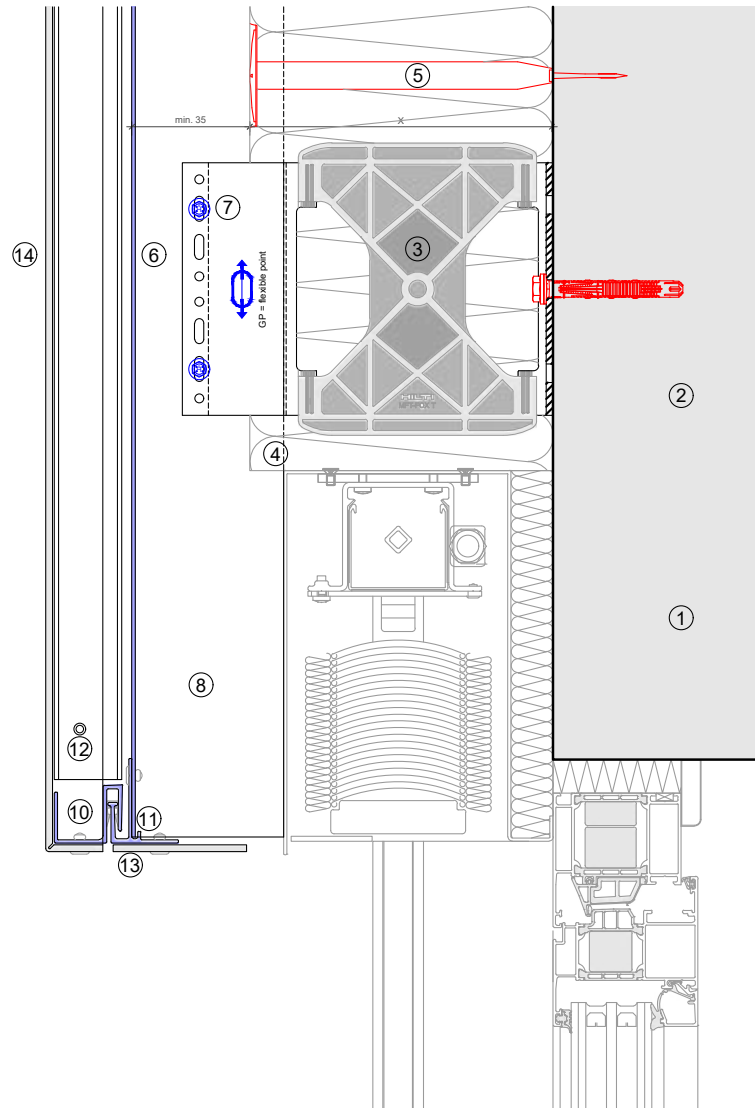
This is an interactive page! Click on the move-back button to jump back to the VIEW OF CLADDING.



MFT-FOX VT 109

**Legend:**

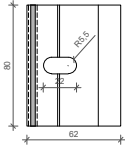
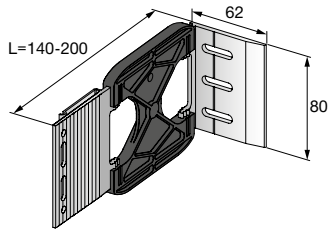
- ① Base material
- ② Anchor acc. to static
- ③ Bracket and isolator
- ④ Insulation
- ⑤ Fixing insulation
- ⑥ Profile
- ⑦ Self drilling screw
- ⑧ Ventilation gap
- ⑨ Z profile
- ⑩ S-profile
- ⑪ Plastic clips
- ⑫ Rivet
- ⑬ Base profile
- ⑭ Cladding



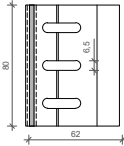
This is an interactive page! Click on the move-back button to jump back to the VIEW OF CLADDING.



## BRACKETS RANGE



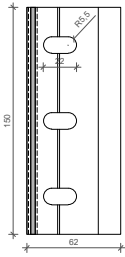
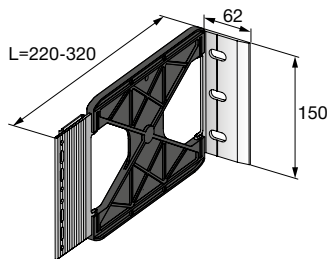
Anchor



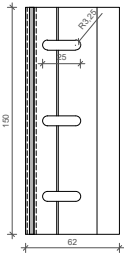
Direct fastening  
Screw fastening

### MFT-FOX VT Medium

| Order Description                           | Item No. | Length |
|---|----------|--------|
| <b>DIRECT FASTENING and SCREWS D=6,5 mm</b> |          |        |
| MFT-FOX VT 140 M 6,5                        | 2096973  | 140 mm |
| MFT-FOX VT 160 M 6,5                        | 2096975  | 160 mm |
| MFT-FOX VT 180 M 6,5                        | 2096977  | 180 mm |
| MFT-FOX VT 200 M 6,5                        | 2096979  | 200 mm |
| <b>ANCHORS D=11mm</b>                       |          |        |
| MFT-FOX VT 140 M 11                         | 2096974  | 140 mm |
| MFT-FOX VT 160 M 11                         | 2096976  | 160 mm |
| MFT-FOX VT 180 M 11                         | 2096978  | 180 mm |
| MFT-FOX VT 200 M 11                         | 2096980  | 200 mm |



Anchor

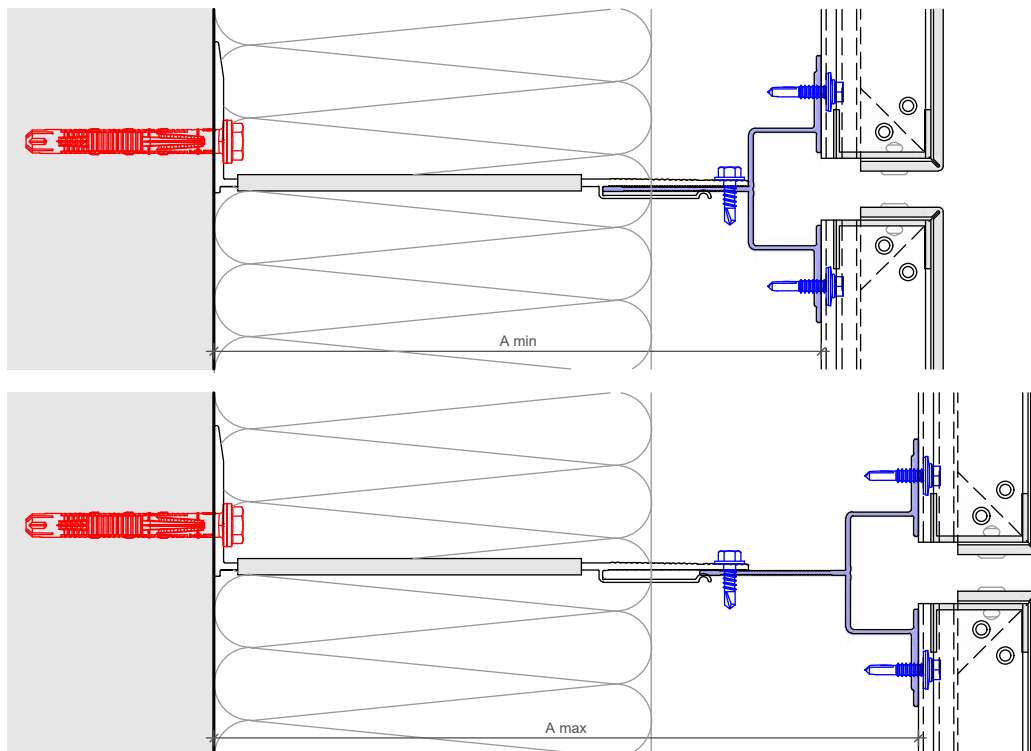


Direct fastening  
Screw fastening

### MFT-FOX VT Large

| Order Description                           | Item No. | Length |
|---|----------|--------|
| <b>DIRECT FASTENING and SCREWS D=6,5 mm</b> |          |        |
| MFT-FOX VT 220 L 6,5                        | 2096981  | 220 mm |
| MFT-FOX VT 240 L 6,5                        | 2096983  | 240 mm |
| MFT-FOX VT 260 L 6,5                        | 2096985  | 260 mm |
| MFT-FOX VT 280 L 6,5                        | 2096987  | 280 mm |
| MFT-FOX VT 300 L 6,5                        | 2096989  | 300 mm |
| MFT-FOX VT 320 L 6,5                        | 2096991  | 320 mm |
| <b>ANCHORS D=11mm</b>                       |          |        |
| MFT-FOX VT 220 L 11                         | 2096982  | 220 mm |
| MFT-FOX VT 240 L 11                         | 2096984  | 240 mm |
| MFT-FOX VT 260 L 11                         | 2096986  | 260 mm |
| MFT-FOX VT 280 L 11                         | 2096988  | 280 mm |
| MFT-FOX VT 300 L 11                         | 2096990  | 300 mm |
| MFT-FOX VT 320 L 11                         | 2096992  | 320 mm |

## BRACKET PROFILE ADJUSTMENT



| Profiles                | MFT-T<br>60x80x1,8 6m<br>60x100x1,8 6m<br>60x120x1,8 6m |        | MFT-T<br>40x80x1,8 6m |        | MFT-L<br>60x40x1,8 6m |        | MFT-L<br>40x40x1,8 6m |        |
|-------------------------|---|--------|-----------------------|--------|-----------------------|--------|-----------------------|--------|
|                         | A min*  | A max* | A min*                | A max* | A min*                | A max* | A min*                | A max* |
| <b>Brackets</b>         |   |        |                       |        |                       |        |                       |        |
| MFT-FOX VT 140 M 6,5/11 | 141.8   | 181.8  | 141.8                 | 161.8  | 140                   | 181.8  | 140                   | 161.8  |
| MFT-FOX VT 160 M 6,5/11 | 161.8   | 201.8  | 161.8                 | 181.8  | 160                   | 201.8  | 160                   | 181.8  |
| MFT-FOX VT 180 M 6,5/11 | 181.8   | 221.8  | 181.8                 | 201.8  | 180                   | 221.8  | 180                   | 201.8  |
| MFT-FOX VT 200 M 6,5/11 | 201.8   | 241.8  | 201.8                 | 221.8  | 200                   | 241.8  | 200                   | 221.8  |
| MFT-FOX VT 220 L 6,5/11 | 221.8   | 261.8  | 221.8                 | 241.8  | 220                   | 261.8  | 220                   | 241.8  |
| MFT-FOX VT 240 L 6,5/11 | 241.8   | 281.8  | 241.8                 | 261.8  | 240                   | 281.8  | 240                   | 261.8  |
| MFT-FOX VT 260 L 6,5/11 | 261.8   | 301.8  | 261.8                 | 281.8  | 260                   | 301.8  | 260                   | 281.8  |
| MFT-FOX VT 280 L 6,5/11 | 281.8   | 321.8  | 281.8                 | 301.8  | 280                   | 321.8  | 280                   | 301.8  |
| MFT-FOX VT 300 L 6,5/11 | 301.8   | 341.8  | 301.8                 | 321.8  | 300                   | 341.8  | 300                   | 321.8  |
| MFT-FOX VT 320 L6,5/11  | 321.8   | 361.8  | 321.8                 | 341.8  | 320                   | 361.8  | 320                   | 341.8  |

\* The distance shown is valid for profile thickness of 1,8 mm..



## PRODUCTS RANGE

### Bracket fasteners

HUS-HR



HRD-H



HST-R



HSA-R



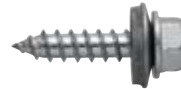
HIT-HY 270



HIT-HY 200-A



S-MP 53S



S-MD 51S / S-MD 53S / S-MD 55S



Direct fastening



### Brackets

MFT-FOX VT Medium



MFT-FOX VT Large



## PRODUCTS RANGE

### Profiles

MFT-L



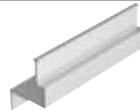
MFT-T



MFT-S



MFT-Z



MFT-OT



MFT-PE



MFT-PW



### Profile fastener

S-AD



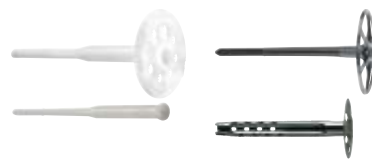
### Accessories

MFT-ISO



### Insulation fasteners

Insulation fasteners





Hilti Corporation  
9494 Schaan Liechtenstein  
P +423-234 2111

[www.facebook.com/hiltigroup](https://www.facebook.com/hiltigroup)  
[www.hilti.group](http://www.hilti.group)