



# FIRESTOP CAST-IN DEVICE CFS-CID

Technical manual

European technical assessment  
ETA-20/1233

Issue 12/2020



# FIRESTOP CAST-IN DEVICE CFS-CID

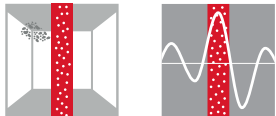


## Applications

- Concrete slabs built with traditional formwork
- New building construction
- Sealing combustible and non-combustible pipe penetrations
- Tested with pipe elbows, which allows reduced service zone

## Advantages

- One-step firestop solution for a variety of pipe materials and diameters – no additional backfilling required
- Modular connection allows close placement of multiple penetrations
- Quick and simple installation
- Integrated moisture and smoke seal
- Lid strong enough to carry foot traffic and light access equipment



## Technical Data

<b>Base materials</b>	Concrete
<b>Approvals</b>	EN 13501-2: 2007+A1:2009, EN 1366-3:2009
<b>Height</b>	250 mm
<b>Application temperature range</b>	-5 – 50 °C
<b>Temperature resistance range</b>	-20 – 100 °C
<b>Colour</b>	Red
<b>Re-penetration</b>	Easy
<b>Reaction to fire class (EN 13501-1)</b>	E



Ordering description	Pipe diameter – range	Sales pack quantity	Item number
CFS-CID 50	32– 63 mm	1 pc	2124523
CFS-CID 75	50– 75 mm	1 pc	2124524
CFS-CID 110	80– 110 mm	1 pc	2124525
CFS-CID 160	125– 160 mm	1 pc	2124526

## MANIFOLD ADAPTER CFS-CID

### Applications

- Creation of a 70 mm deep recess in the slab
- For use in conjunction with the appropriate cast-in device
- Creates an underside void for the installation of an elbow-connector system

### Advantages

- Allows a manifold to be accommodated and thus simplifies plumbing installations
- Accommodates manifold connections and shower traps for walk-in showers and wet rooms
- Reduces final ceiling height by creating a 70 mm recess in the slab
- Pipes can be installed closer to the ceiling, thus reducing spacing

### Technical Data

<b>Base materials</b>	Concrete
<b>Height</b>	77 mm
<b>Application temperature range</b>	-5 – 50 °C
<b>Colour</b>	Red



Ordering description

Sales pack quantity

Item number

CFS-CID Manifold adapter

1 pc

2124527

## HEIGHT EXTENSIONS CFS-CID

### Applications

- For use with CFS-CID cast-in devices

### Advantages

- “Screw on” feature promotes a secure connection to the device and cover cap
- Adds 150 mm of height to pre-formed firestop devices

### Technical Data

<b>Base materials</b>	Concrete
<b>Height</b>	150 mm
<b>Application temperature range</b>	-5 – 50 °C
<b>Colour</b>	Red



Ordering description

Pipe diameter - range

Sales pack quantity

Item number

Extension tube 6" CP 680-P 2"

32 – 63 mm

1 pc

244252

Extension tube 6" CP 680-P 3"

50 – 75 mm

1 pc

244253

Extension tube 6" CP 680-P 4"

90 – 110 mm

1 pc

244254

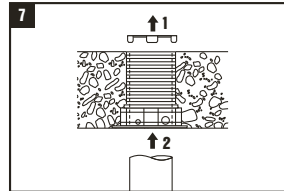
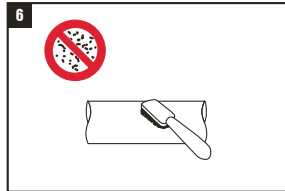
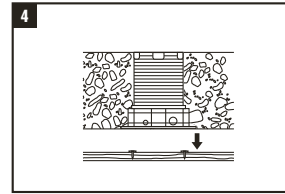
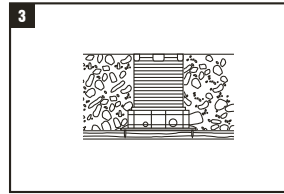
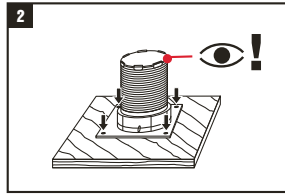
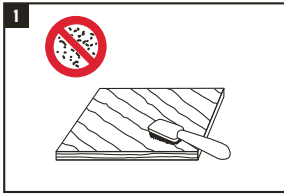
Extension tube 6" CP 680-P 6"

125 – 160 mm

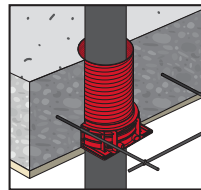
1 pc

244255

## GENERAL INSTRUCTIONS FOR USE



## GENERAL INFORMATION



Partition	Rigid Floor
Base material thickness (t <sub>E</sub> )	≥ 150 mm
Distance between devices	Zero for all pipe types
Fixing to formwork	Wood nails
Gap filling	No backfilling required
Penetrant	Combustible and Non-combustible Pipes

## MAIN APPROVED APPLICATIONS

Application	Pipe material	Pipe Ø mm	Classification in rigid floor
<b>Waste Water, Roof drainage</b> 	<b>PE/PE-HD</b> EN 1519-1, EN 12666-1 (covers EN 12201-2, EN 1519-1, EN 12666-1, EN 1455-1 (ABS), EN 1565-1(SAN+PVC)) EN ISO 15494 (Industrial), DIN 8074	40 – 160	EI 180 U/U
	<b>PVC-U</b> EN 1329-1 or EN 1453-1 or EN 1452-1 (covers EN 1329-1, EN 1453-1, EN 1452-1, EN 1566-1), EN ISO 15493 (Industrial, equivalent EN 1452)	63 – 160 50 – 160	EI 180 U/U EI 120 U/U
	<b>PE S2 Geberit db20</b> (Non Regulated)	56 – 160	EI 180 U/U
	<b>PP (EN 1451-1, DIN 4102)*</b>	40 – 160	EI 180 U/U
<b>Drinking Water</b> 	<b>PP-R DIN 8077/8078</b> (e.g. Aquatherm)	32 – 160	EI 180 U/C
	<b>PE-Xa Rehau Rautitan Flex</b>	32 – 63	EI 180 U/U
<b>Heating</b> 	<b>AL-composite pipes with elastomeric insulation</b> (e.g. Geberit Mepla, etc)	40	EI 180 U/C
	Copper, Steel, Stainless Steel and Cast Iron with elastomeric, glass or mineral wool insulation	18 – 89	EI 180 C/U

\* Coes "Blue Power", Coes "PhoNoFire", "Geberit Silent PP", Marley Silent, Ostendorf "Skolan-dB", Pipelife "Master 3", POLOPLAST "Polokal NG", POLOPLAST "Polokal 3S", "POLOPLAST Polokal XS", Rehau "Raupiano Plus", Wavin "AS", KeKelit "Phonex AS", Wavin "SiTech", Valsire "Triplus", Valsire "Silere"

Excerpt of ETA document. Check the exact field of application for each pipe (type, diameter and pipe wall thickness) in the ETA-20/1233 document.

## OTHER APPROVED APPLICATIONS

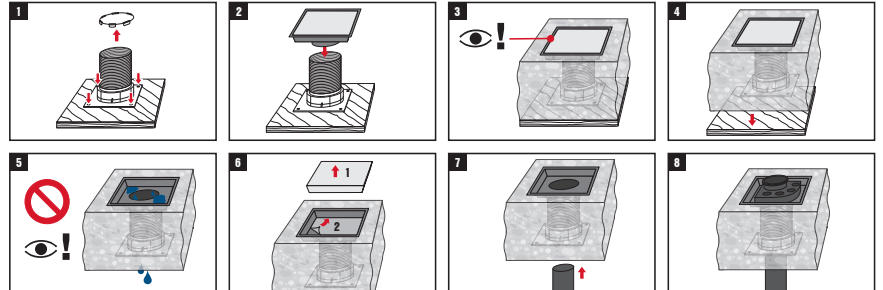
### CFS-CID Manifold Adapter

Dimensions:  
280 × 280 × 75 mm

To use with Firestop Cast-in  
CFS-CID 110 mm

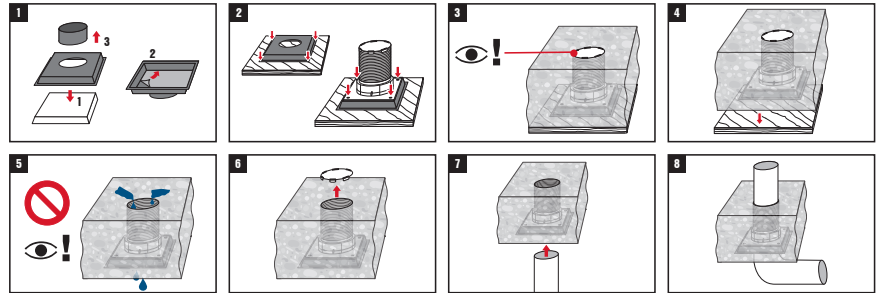


#### Recess for pipe junctions



#### Recess for pipe elbow couplers

EI 180 U/U for PVC and HD-PE pipes Ø = 110 mm



### Firestop Cast-in Extensions

To add an extra 150 mm to the  
Cast-in devices with a strong  
and stable connection.

Coupler and extensions  
available for all CFS-CID  
diameters.



### Firestop Cast-in CFS-CID without pipe penetrations

All sizes tested and approved  
only with the lid on top.



See ETA-20/1233 for details of  
approved pipes.

### Zero distance between Cast-in Devices

Possibility to assemble Firestop  
Cast-in devices with zero  
separation between them.



See ETA-20/1233 for details of  
approved pipes.

## CHARACTERISTICS OF CFS-CID

Characteristics	Assessment of characteristics	Norm, standard, test
<b>Health and the environment</b> Emission test	CFS-CID was tested for VOC emissions according to ISO 16000 and was deemed compliant to the AgBB regulations (version 2010). The concentration of SVOC after 3 and 28 days was $< 5 \mu\text{g}/\text{m}^3$ . The concentration of the total emission of VOC after 3 and 28 days was $\leq 25 \mu\text{g}/\text{m}^3$	Material safety data sheet
<b>Protection against noise</b> Airborne sound insulation	Hilti CFS-CID 50 $D_{n,w} = 55 \text{ dB}$ Hilti CFS-CID 75 $D_{n,w} = 51 \text{ dB}$ Hilti CFS-CID 110 $D_{n,w} = 48 \text{ dB}$ Hilti CFS-CID 160 $D_{n,w} = 46 \text{ dB}$	EN ISO 10140-1 EN ISO 10140-2 EN ISO717-1
<b>Durability and serviceability</b>	Category Y2 (suitable for penetration seals for use in dry indoor conditions at temperature below $0 \text{ }^\circ\text{C}$ with with no exposure to rain nor UV.	EAD 350454-00-1104
<b>Reaction to fire</b>	Class E	EN 13501-1



Hilti Corporation  
9494 Schaan, Liechtenstein  
P +423-234 2965

[www.facebook.com/hiltigroup](https://www.facebook.com/hiltigroup)  
[www.hilti.group](http://www.hilti.group)