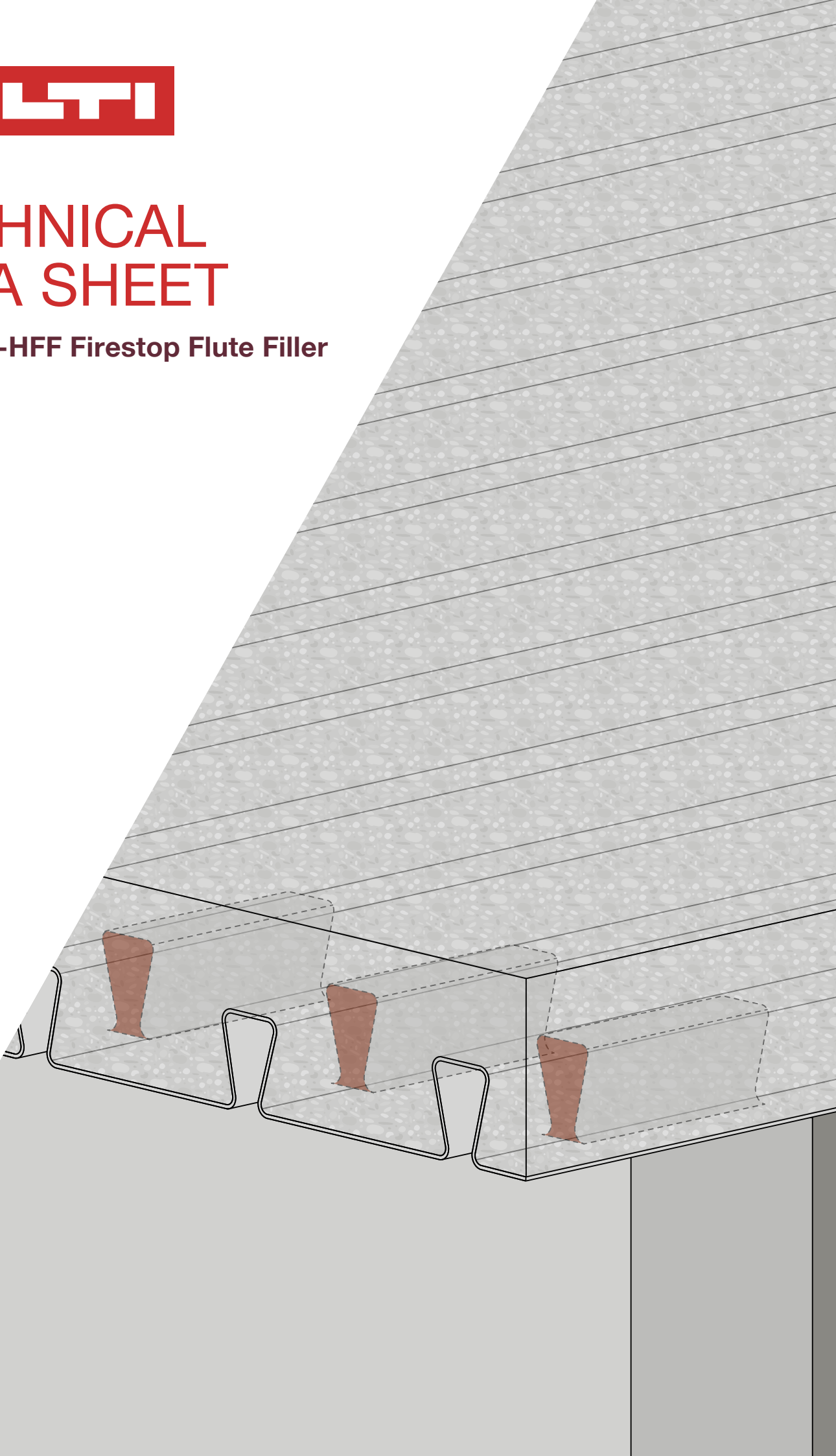




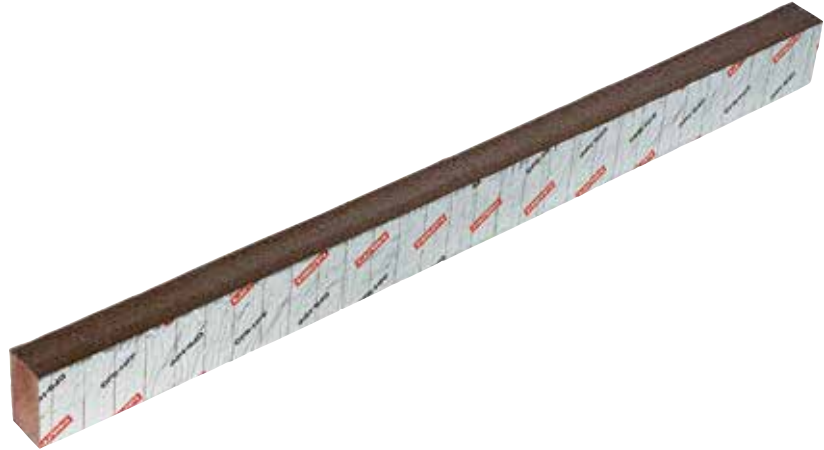
TECHNICAL DATA SHEET

Hilti CFS-HFF Firestop Flute Filler



TECHNICAL DATA SHEET

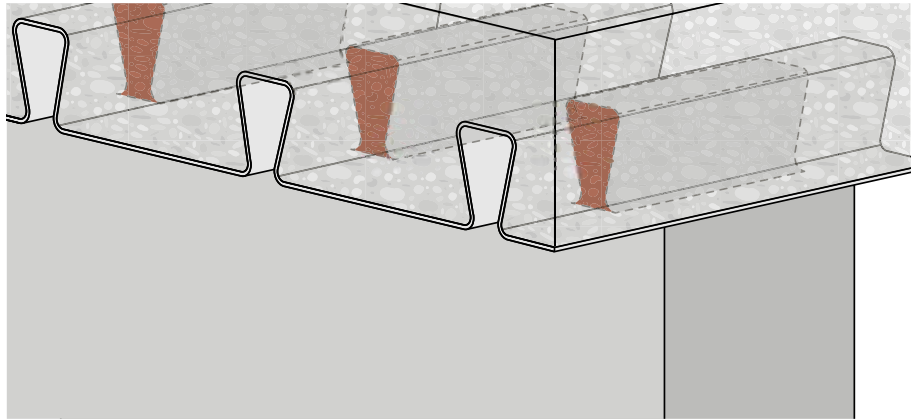
Hilti CFS-HFF Firestop Flute Filler



CFS-HFF Firestop Flute Filter

Applications

- Firestop flute filler for flexible walls attached to Holorib composite slabs
- Smoke- and sound-seal solution for flexible walls attached to Holorib composite slabs



Advantages

- Fast and simple to install – minimal preparation needed
- Cost-effective – very low total installed cost
- Easy to cut to the required installation depth
- No mess and zero waste – no caulking or tools required
- Reliable product solution – easy to inspect
- Pre-formed product – emission-free and immediately functional after installation
- Reliability – durable material for long-term performance
- Excellent firestop properties – sound and acoustic tested
- Flexible solution – CFS-HFF flute filler can easily be retrofitted where flexible walls are already in place
- Easy modification of flexible walls – CFS-HFF flute filler can be exchanged and removed without leaving any residue

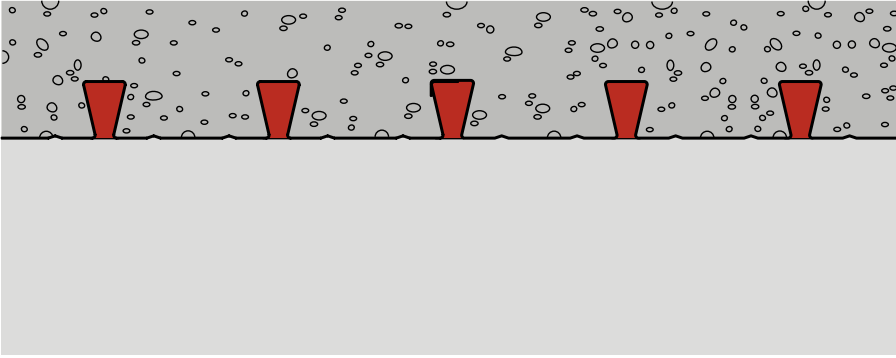
Technical Data

Chemical basis:	Polyurethane foam
Color:	Anthracite
Reaction to Fire acc. EN 13501-1:	Class E
Dimensions:	750 mm × 35 mm × 65 mm
Application temperature range:	-5 – 50 °C
Storage and transportation temperature range:	-15 – 50 °C
Temperature resistance range:	-15 – 50 °C

Ordering description	Dimensions	Item number
CFS-HFF	750 mm x 65 mm x 35 mm	2195448

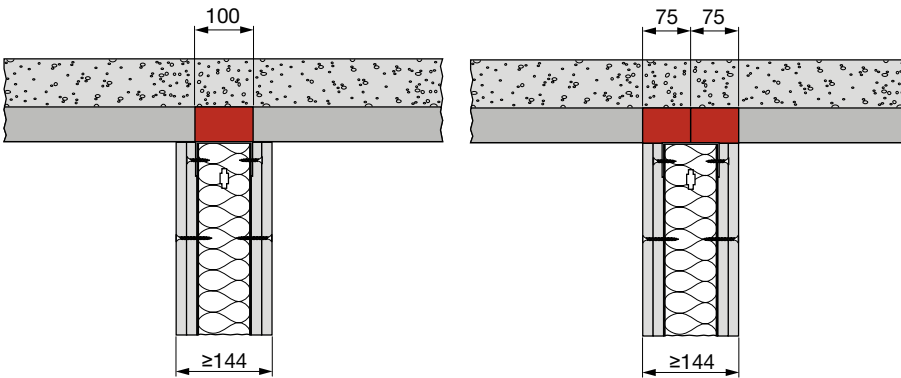
Minimum order quantity is 22 pcs. in one cardboard box.

POSSIBLE INSTALLATION OF CFS-HFF



BASIC CONNECTION

HOLORIB/SUPERHOLORIB profile with basic connection to flexible wall: The wall must have a thickness of ≥ 144 mm and comprise steel studs lined on both faces with several layers of gypsum boards (drywall) of minimum 25 mm overall thickness on both sides. The wall must be classified in accordance with EN 13501-2 (EI 30 – EI 90).



CFS-HFF flute filler – 100 mm length

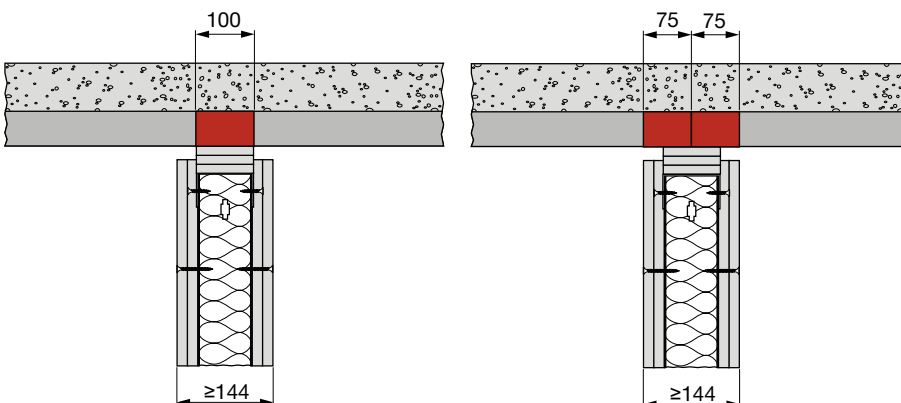
CFS-HFF flute filler – 150 mm length
(2 × 75 mm)

Fire ratings

	Basic connection
	Profile depth: ≥ 94 mm Wall thickness: ≥ 144 mm
	Classification E = integrity I = insulation
CFS-HFF 100 mm length	EI 90/E 120
CFS-HFF 150 mm length (2 × 75 mm)	EI 90/E 120

DEFLECTION HEAD

a. HOLORIB/SUPERHOLORIB profile with deflection head connection to flexible wall: The wall must have a thickness of ≥ 144 mm and comprise steel studs lined on both faces with several layers of gypsum boards (drywall) of minimum 25 mm overall thickness on both sides. The wall must be classified in accordance with EN 13501-2 (EI 30 – EI 120).



CFS-HFF flute filler – 100 mm length

CFS-HFF flute filler – 150 mm length
(2 × 75 mm)

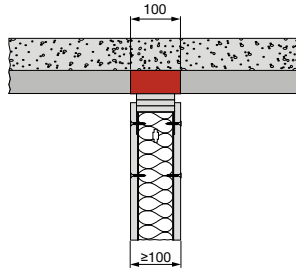
Fire ratings

	Deflection Head
	Profile depth: ≥ 94 mm Wall thickness: ≥ 144 mm
	Classification E = integrity I = insulation
CFS-HFF 100 mm length	EI 90/E 120
CFS-HFF 150 mm length (2 × 75 mm)	EI 120

Fire ratings

	Deflection Head Profile depth: ≥ 70 mm Wall thickness: ≥ 100 mm
	Classification E = integrity I = insulation
CFS-HFF 100 mm length	EI 90/E 120

b. HOLORIB/SUPERHOLORIB profile with deflection head connection to flexible wall: The wall must have a thickness of ≥ 100 mm and comprise steel studs lined on both faces with minimum one layer of gypsum board (drywall) of minimum 15 mm overall thickness on both sides. The wall must be classified in accordance with EN 13501-2 (EI 30 – EI 90).

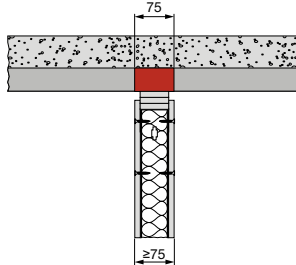


CFS-HFF flute filler – 100 mm length

Fire ratings

	Deflection Head Profile depth: ≥ 50 mm Wall thickness: ≥ 75 mm
	Classification E = integrity I = insulation
CFS-HFF 75 mm length	EI 60

c. HOLORIB/SUPERHOLORIB profile with deflection head connection to flexible wall: The wall must have a thickness of ≥ 75 mm and comprise steel studs lined on both faces with minimum one layer of gypsum board (drywall) of minimum 12.5 mm overall thickness on both sides. The wall must be classified in accordance with EN 13501-2 (EI 30 – EI 60).



CFS-HFF flute filler – 75 mm length

INSTALLATION OF CFS-HFF FLUTE FILLER

- 219498-05.2016
- Before handling and for specific application details, refer to Hilti product literature, 3rd party published listings and national approvals. For professional use only.
 - Vor Gebrauch und für spezifische Anwendungshinweise lesen Sie die Hilti Produktbeschreibungen, veröffentlichte Listungen von Fremdüberwachern und nationale Zulassungen. Nur für gewerbliche Anwender.
 - Avant toute utilisation et pour tout détail concernant une application, se référer à la documentation Hilti, à la liste de publications des tierces parties et aux approbations nationales. Seulement pour utilisateurs professionnels.
 - Antes de usar y para detalles específicos de aplicación, véase la información que acompaña al producto Hilti, el listado publicado por terceros y las aprobaciones nacionales. Solamente para los usuarios profesionales.

