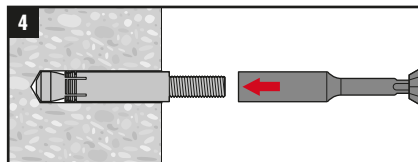
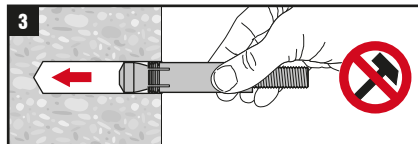
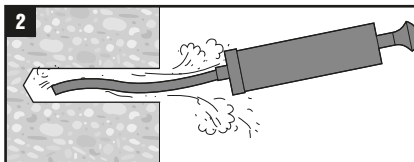
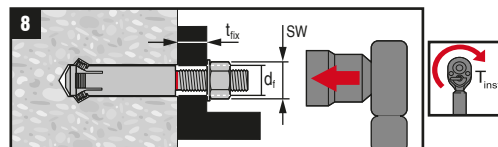
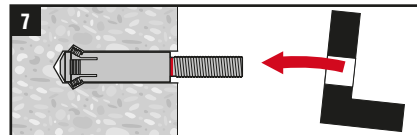
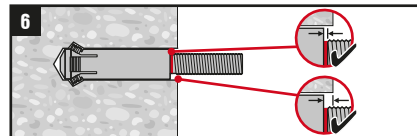
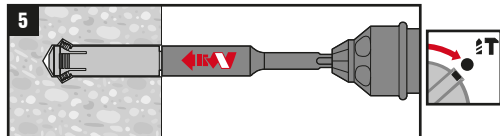


1.1	
	TE40 TE50

1.2		
HMU-PF	TE-C (SDS plus)	TE-Y (SDS Max)
M16x100/30	TE-C-HMU-B M16x100	TE-Y-HMU-B M16x100
M16x100/60	TE-C-HMU-B M16x100	TE-Y-HMU-B M16x100
M16x125/30	TE-C-HMU-B M16x125	TE-Y-HMU-B M16x125
M16x125/60	TE-C-HMU-B M16x125	TE-Y-HMU-B M16x125



4.1		
	TE-C (SDS plus)	TE-Y (SDS Max)
	TE-C-HMU-ST-M16	TE-Y-HMU-ST-M16



8.1	HMU-PF	t_{fix}	SW	T_{inst}	d_i
	M16x100/30	30	24	120 Nm (89 ft-lb)	18mm
	M16x100/60	60	24	120 Nm (89 ft-lb)	18mm
	M16x125/30	30	24	120 Nm (89 ft-lb)	18mm
	M16x125/60	60	24	120 Nm (89 ft-lb)	18mm