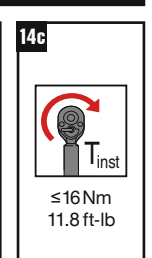
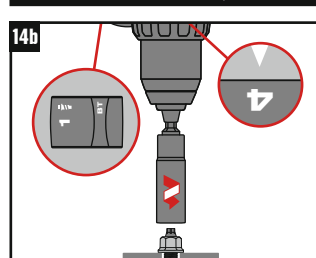
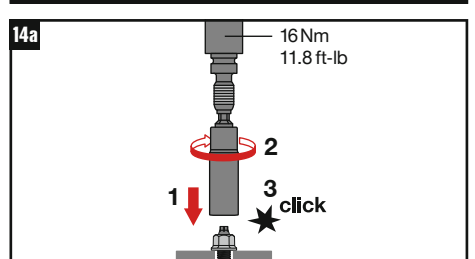
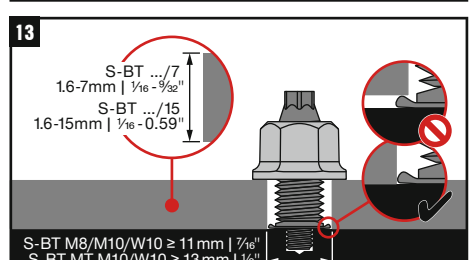
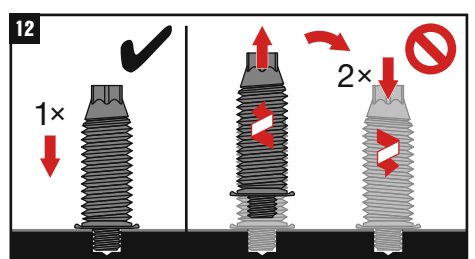
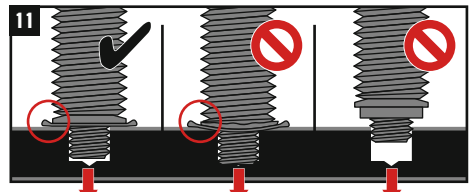
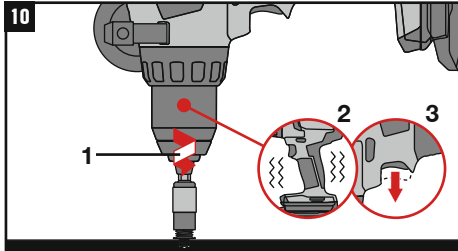
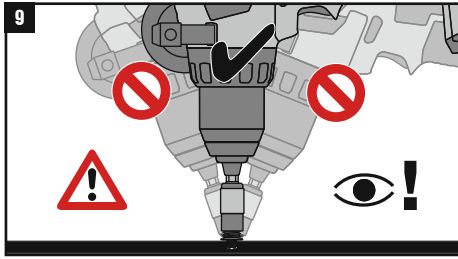
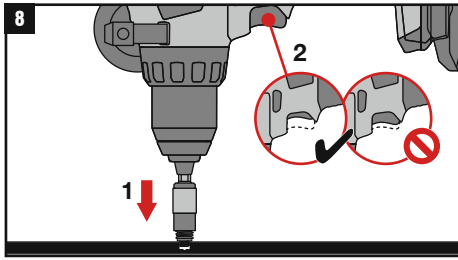
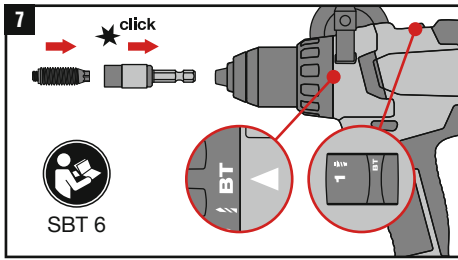
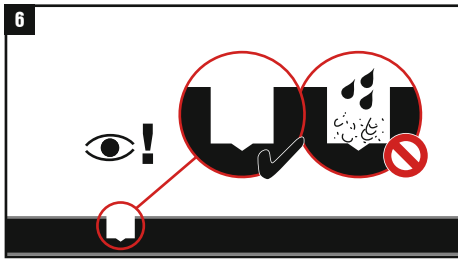
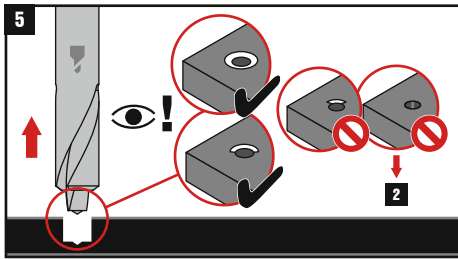
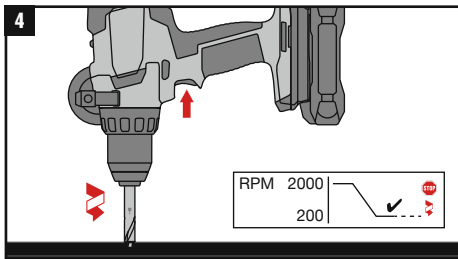
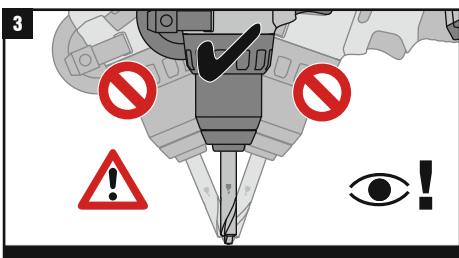
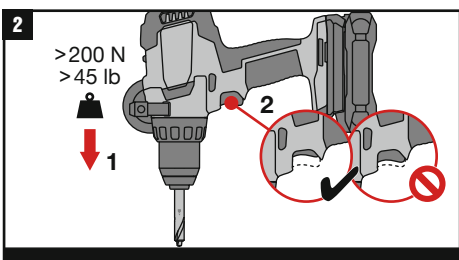
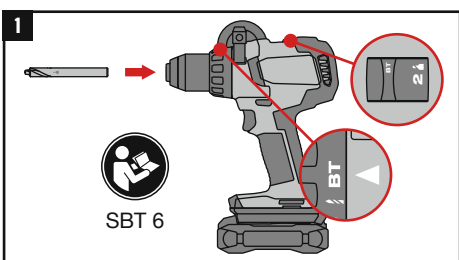


S-BT-MF M8/15 AN 6 HL
S-BT-MF M10/15 AN 6 HL
S-BT-MF W10/15 AN 6 HL
S-BT-MF M8/7 AN 6 HL
S-BT-MF MT M10/15 AN 6 HL
S-BT-MF MT W10/15 AN 6 HL

Hex nut with flange M8-F
Hex nut with flange M10-F
Hex nut with flange W10-F

| | |
|--|---|
| | SBT 6 |
| | TS-BT 5.3-65 S |
| | S-SH BT M8/M10/W10 |
| | Torque Tool S-BT 1/4" 16 Nm / 11.8 lb-ft |
| | S-NS 13 C 95/3 1/4" (M8) S-NS 15 C 95/3 1/4" (M10) S-NS 9/16" C 95/3 1/4" (W10) |
| | S-IC BT |



| |
|--|
| CE |
| 23 |
| Hilti Corporation, Feldkircherstrasse 100, FL-9494 Schaan, Liechtenstein |
| Hilti-SF-DoP-045 |
| ETA-23/0001 |
| EAD 333037-00-0602 |
| 0672-CPR |
| Threaded studs for connection of materials to structural steel and aluminium members |
| www.hilti.group |